

**LINE LEGEND**

---	EXISTING CONTOUR
---	SANITARY SEWER
---	ELECTRIC OVERHEAD
---	UNDER GROUND ELECTRIC
---	WATER LINE
---	IRRIGATION DRIP LINE
○	SANITARY MANHOLE
⊕	WATER VALVE
⊕	ELECTRIC TRANSFORMER
⊕	CATCH BASIN
⊕	WATER METER
⊕	FIRE HYDRANT
X	FENCE
---	8" STEAM LINE
---	PIPE LINE
○	UTILITY MANHOLE
---	SILT FENCE
---	LIMITS OF CONSTRUCTION

**IRRIGATION LEGEND**

SYMBOL	DESCRIPTION	SPECIFICATION
○	POP-UP ROTOR/GEAR DRIVEN	RAINBIRD R-50
---	MAIN LINE	PVC RUBBLE PIPE-SIZE AS INDICATED
□	WATER SOURCE	IRRIGATION PUMP
⊕	GATE VALVE	SIZE AS INDICATED, SCH. 40 PVC
⊕	PRESSURE SUSTAINING VALVE	RAINBIRD 200-PES-B-PRS-B OR EQUIVALENT
---	SLEEVING	SIZE AS INDICATED

**LEGEND**

X = ANGLE  
 A = CENTER ANGLE  
 L = ARC LENGTH  
 R = RADIUS  
 P.C. = POINT OF CURVATURE  
 P.T. = POINT OF TANGENCY  
 P.I. = POINT OF INTERSECTION  
 P.V. = POINT OF VERGENCE  
 P.L. = POINT OF LONGITUDINAL INTERSECTION  
 P.S. = POINT OF SLOPE INTERSECTION  
 P.E. = POINT OF ENTRY  
 P.A. = POINT OF APPROXIMATION  
 P.C. = POINT OF CURVATURE  
 P.T. = POINT OF TANGENCY  
 P.I. = POINT OF INTERSECTION  
 P.V. = POINT OF VERGENCE  
 P.L. = POINT OF LONGITUDINAL INTERSECTION  
 P.S. = POINT OF SLOPE INTERSECTION  
 P.E. = POINT OF ENTRY  
 P.A. = POINT OF APPROXIMATION

**NOTE:**  
 CONTRACTOR TO INSTALL HOSE BIBS AT EACH SIDE OF THE BUILDING (4 SIDES)

**NOTE:**  
 CONTRACTOR TO INSTALL DEEP IRRIGATION IN ALL AREAS OF NEW PLANTING. INSTALL HOSE BIBS AS NECESSARY TO MAINTAIN CORRECT FUNCTIONING OF THIS IRRIGATION SYSTEM.

PURPLE PIPE AVAILABLE FROM: WORLD OF PLASTICS  
 3206 ENTERPRISE ROAD  
 FT. PIERCE, FLORIDA 34982

**REVISIONS**

NO.	DESCRIPTION	DRAWN	CHECKED	DATE
1	ENVIRONMENTAL PERMIT REVIEW	DEJ	PCO	3/21/04

**PHASE**

NO.	DESCRIPTION	DRAWN	CHECKED	DATE

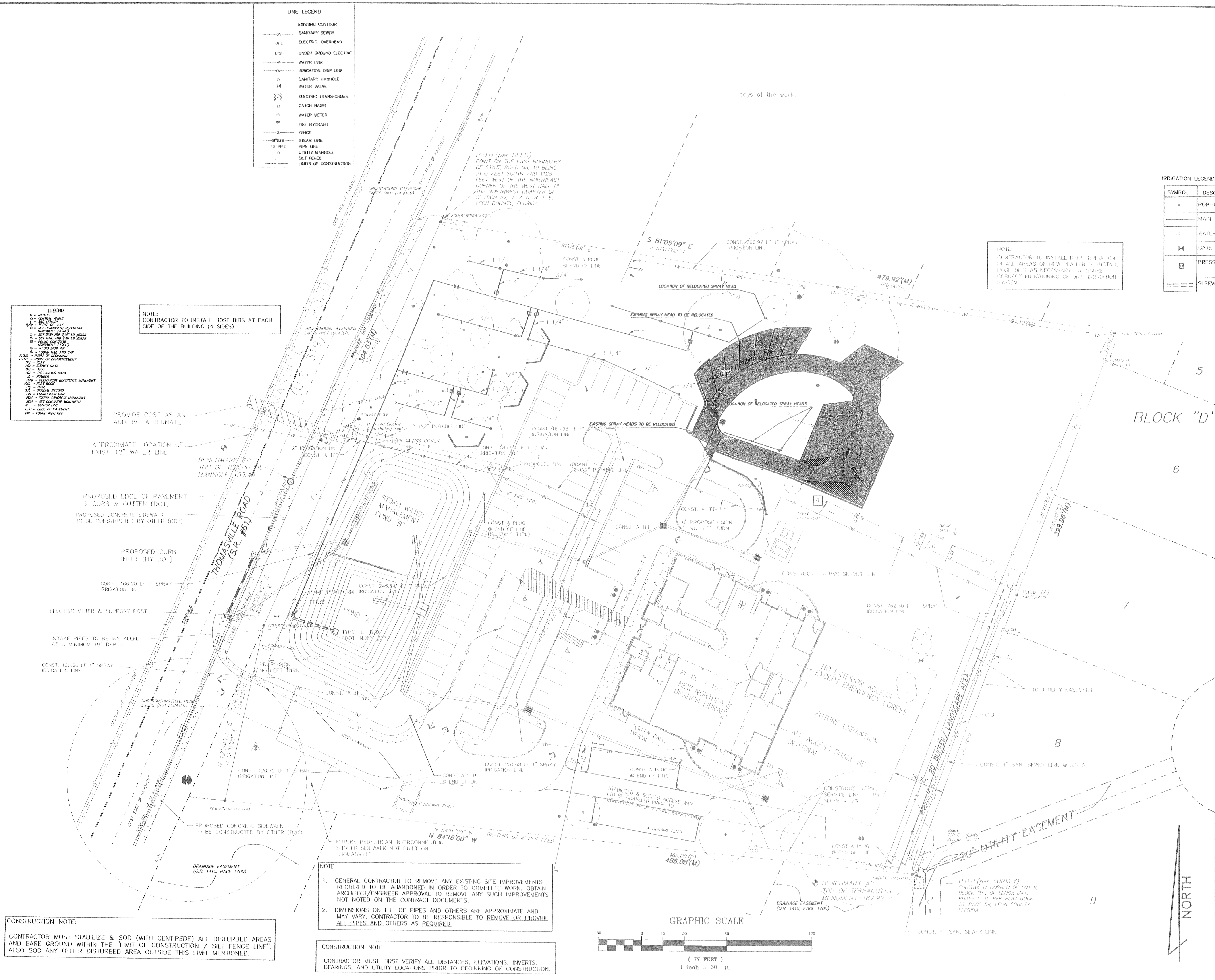
**JIRA** Architects, Inc. Commission Number: 97136  
 2551 BLAIRSTONE PINES DR.  
 TALLAHASSEE, FLORIDA  
 PHONE: (850) 878-7891  
 FAX: (850) 878-7491

**SPECTRA ENGINEERING & RESEARCH, INC.**  
 CIVIL • ENVIRONMENTAL • PLANNING • LAND SURVEYING  
 345 S. Magnolia Drive, Suite E-25 Tallahassee, Florida 32301 (904)656-9834  
 DATE: 02/26/99  
 PROJECT: NORTHEAST BRANCH LIBRARY

**NORTHEAST BRANCH LIBRARY**  
**LEROY COLLINS**  
**LEON COUNTY PUBLIC LIBRARY**  
**TALLAHASSEE, FLORIDA**

**REVISED IRRIGATION PLAN**

SHEET NUMBER: C-6



**CONSTRUCTION NOTE:**  
 CONTRACTOR MUST STABILIZE & SOD (WITH GENTLEPEDE) ALL DISTURBED AREAS AND BARE GROUND WITHIN THE "LIMIT OF CONSTRUCTION / SILT FENCE LINE". ALSO SOD ANY OTHER DISTURBED AREA OUTSIDE THIS LIMIT MENTIONED.

**NOTE:**

- GENERAL CONTRACTOR TO REMOVE ANY EXISTING SITE IMPROVEMENTS REQUIRED TO BE ABANDONED IN ORDER TO COMPLETE WORK. OBTAIN ARCHITECT/ENGINEER APPROVAL TO REMOVE ANY SUCH IMPROVEMENTS NOT NOTED ON THE CONTRACT DOCUMENTS.
- DIMENSIONS ON L.F. OF PIPES AND OTHERS ARE APPROXIMATE AND MAY VARY. CONTRACTOR TO BE RESPONSIBLE TO REMOVE OR PROVIDE ALL PIPES AND OTHERS AS REQUIRED.

**CONSTRUCTION NOTE:**  
 CONTRACTOR MUST FIRST VERIFY ALL DISTANCES, ELEVATIONS, INVERTS, BEARINGS, AND UTILITY LOCATIONS PRIOR TO BEGINNING OF CONSTRUCTION.

